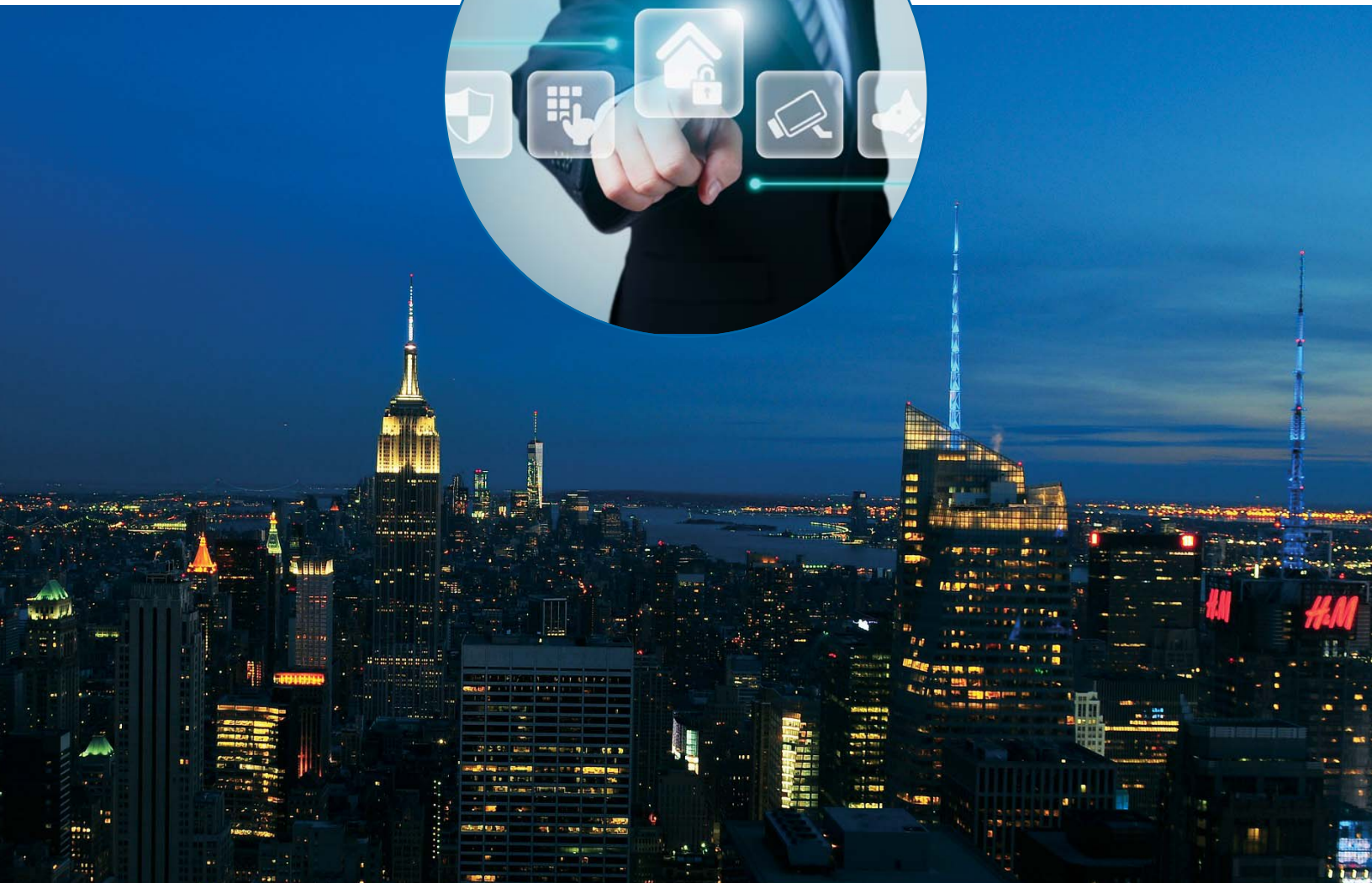




CUTTING EDGE TECHNOLOGY THAT WILL “WOW” RESIDENTS AND VISITORS AND ENHANCE SECURITY



IMAGINE YOUR COMMUNITY'S FUTURE — TODAY

ABOUT KENT TECHNOLOGIES

With more than 30 years of dedicated security experience, Kent Technologies is an expert at identifying the critical needs and challenges of communities. We are the leader and trusted choice for providing a level of security second to none and enhancing the safety of residents, while increasing your property's value. No other security company has more expertise or experience. Kent Technologies is your one-source provider to meet the unique security needs of your community.

IS YOUR COMMUNITY SECURE AND DO RESIDENTS AND VISITORS FEEL SAFE?

Kent Technologies will put the latest security technologies together into a seamless integrated, intelligent and interactive solution that will not only “wow” everyone, but also help reduce administrative costs as well as offer the greatest protection.

That's because our integrated and interactive systems far surpass yesterday's passive security systems, offering a higher level of management and control, seamlessly integrating intrusion, access control and video. You will rest assured knowing that you have the industry's newest and most advanced innovations that are necessary to address any security challenges today and tomorrow.



SECURITY CONSULTING AND DESIGN

Kent Technologies takes great pride in the evaluation, design, installation and maintenance of your security system. First, we meet with you to discuss your needs and develop a specific solution that will surpass your expectations. We then focus on the design of security solutions that are compliant with regulations and consider your buildings specific activities and needs. At the same time, we strive to consider the impact of security and whether we can help identify low cost opportunities by taking advantage of as much of the existing infrastructure and legacy systems as possible while still achieving the highest security levels.

PREVENT CRIMINAL ACTIVITY BEFORE IT HAPPENS

Imagine a video system that doesn't just record, but detects and reacts. Events are triggered mainly by intelligent analytics (such as motion detection) and digital inputs (such as a door opened). We then automatically analyze these events and notify you, security or our monitoring command center of these incidents for an immediate response. A guard watching multiple video cameras might miss an incident, but our video analytic system will pick it up. When a video alarm is triggered at our interactive command center one of our fully trained security analysts will notify the police while turning on warning lights, a siren and perform a voice down. Using our advanced video analytics we can prevent criminal activity before it happens!



MONITORING YOUR COMMUNITY 24/7

Kent Technologies has the most comprehensive and technologically advanced UL monitoring command center available today. You can relax knowing that we go above and beyond the highest standards in the industry and that your community is monitored by our trained security analysts 24 hours a day, 365 days a year.

EASY VISITOR REGISTRATION

Imagine an access control system that automates the entire process of registering a visitor. Quickly register a visitor, capture detailed information, print a badge and notify the resident. Looking up an existing visitor is just as easy as using a variety of simple categories such as tenant and time of visit. Visitor pre-registration and visitor self-registration is also available. Our visitor registration integrates with both video and access systems, which ensures security and reliability.



YOUR SMARTPHONE IS YOUR VIDEO INTERCOM

Imagine seeing who is at the door and even being able to let them in with a push of a button. A resident's smartphone can even serve as a video intercom. But that's not all. The app records every visitor with cloud-based data storage for one year and allows residents to receive email and text messages. It also offers integration with property management software and provides Plug N' Play installation. No smartphone? No problem. Residents can still receive a phone call to open the door.

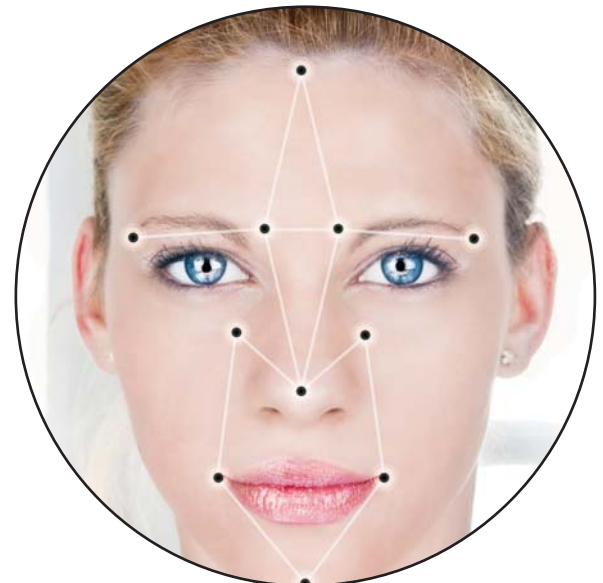


SECURE PARKING

Imagine residents entering the parking garage without needing a card. Our system combines license plate recognition with RFID to detect, recognize and register license plates. In addition, the system offers quick and convenient registered license plate searches, software camera position adjustment, lighting condition adaptive algorithm, support for local and remote unlimited "White" and "Black" lists along with an interface to external applications and devices;

NO CARDS. NO CODES. YOU ARE THE KEY!

Now imagine that your residents won't need keys, cards or codes to enter the community. Their face is the key! No fumbling for a keycard. No balancing bags, while trying to punch in an access code. We offer a secure access solution that is non-invasive, fast and accurate. Authorized users do not have to slow down, sign in or stop. They are identified in motion, and granted seamless access to buildings and facilities by simply walking through, while unauthorized users are barred access.





ELEVATOR CONTROL

Imagine not only controlling access to doors but access to certain floors as well. Elevator integration links our elevator control system with our access control system to increase community security and improve the flow of people. Through this integration, clearances can be set to either grant or deny individual access to certain destinations. It also allows people to access to certain floors within a scheduled time frame.

YOUR COMMUNITY'S FUTURE -- TODAY!

Now imagine your community's future – today - with Kent Technologies. We're just touching the tip of the iceberg. Kent Technologies is ready with the most advanced customized end to end solutions from security consulting, design to implementation for your community.

Interactive Virtual Solutions of the Future – Today!



Miami ■ Naples ■ New York ■ Washington DC ■ Seattle ■ Tampa
Corporate headquarters: 14600 Biscayne Boulevard, North Miami, FL 33181
800.273.KENT ■ www.kenttechnologies.net